



The View from the Start Point Viewing Stage

Take the elevator to the start point, and visit the viewing stage where you can experience the exact same view as the competitors.

Start Tower

59.1 meters high. The elevator has a high ceiling made especially to accommodate the special jumping skis. The view from the 4th floor is superb.



Olympic Cauldron

The Olympic Flame was brought here in February 1998 to open the Nagano Winter Olympics, and the fire symbolizes the courage and spirit of the competitors.

Monument

The monument commemorates the 100th gold medal in Japan's Olympics, received in Hakuba. Looked at upside down, it represents a medal hanging from a neck.



What is Ski Jumping?

Ski Jumping is a contest where competitors ski down a steep slope and jump, with points being awarded for distance and style.



What is Nordic Combined?



Nordic combined is a contest where athletes have to compete in both the ski jumping and the cross-country skiing events. While the ski jumping tests the athletes' explosive power, the cross-country race challenges their endurance. The rare ability to do both confers the title of "King of Skiing" to the winner.

| Normal Hill (Former K-70 meter) | | Large Hill (Former K-90 meter) | |
|------------------------------------|----|-----------------------------------|--------------|
| 318m | A | Total Length | 385m |
| 107m | B | Difference in Elevation | 138m |
| 36.5° | C | Maximum Angle of Inclination | 37.5° |
| 88m | D | Inrun | 109m |
| 90m | K | K Point (or Calculation Point) | 120m |
| 98m | HS | Hill Size | 131m |
| about 82km/h | | Take-off speed | about 92km/h |

Q. What is the K point (Konstruktionspunkt)?

It is German for the Calculation point. For the normal hill, A. the K point is 90 m, and 120 m for the large hill. It is the target distance for the jumpers, near the end of the slope.

Q. What is the P point (Punkt)?

The P point is the beginning of the landing area. It is 70 m on the normal hill, and 90 m on the large hill. (Note: Currently ski jump platform size is given as the Hill size of X m and the K point of Y m.)

Q. What is the Hill size?

The Hill size is the distance from the take-off point to the longest area where a ski jumper can safely land. In Hakuba, the normal hill size is 98 m, and the large hill size is 131 m.

Q. How is the jump distance measured? (Straight or curved line?)

A. It is measured in a curved line, from the take-off point to the median of the two points where both feet touch down.

Q. What kinds of jump platforms are there?

A. Small, medium, normal, large, and flying hills.

Try to find the lucky items!

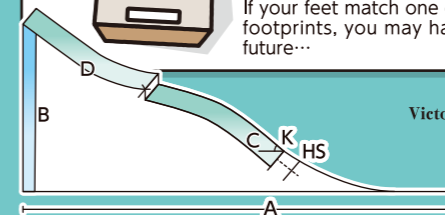
The gold No. 1 lift

Every year many athletes and students come to the Hakuba Ski Jumping Stadium to wish for luck in winning competitions and other endeavors. If you ride in this, your dream may just come true...

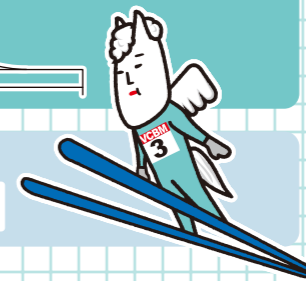


The footprints of the 4 gold medalists of Japan's Ski Jumping team

If your feet match one of the gold medalists' footprints, you may have good luck in your future...



Hakuba's Mascot
Victoire Cheval Blanc Murao III



There is ski jumping in the green season as well! Stay up to date on the various events and competitions.

Hakuba Ski Jumping Stadium @hakubajump

Hakuba Ski Jumping Stadium hakuba ski jumping hill

Blog http://blogs.yahoo.co.jp/hakuba_jump

HAKUBA HISTORY

SKI JUMPING STADIUM

Construction for the Hakuba Ski Jumping Stadium was completed in November, 1992, six years after the basic plans were developed. It was here during the 1998 Nagano Winter Olympics that the Japanese people were deeply moved when Japan's ski jumping team secured a gold medal. From that time on, it has been a draw for many tourists, and has become one of the top three tourist establishments in Nagano.



HAKUBA OLYMPIC GALLERY Nagano Olympic/ Paralympic Commemorative Display Space



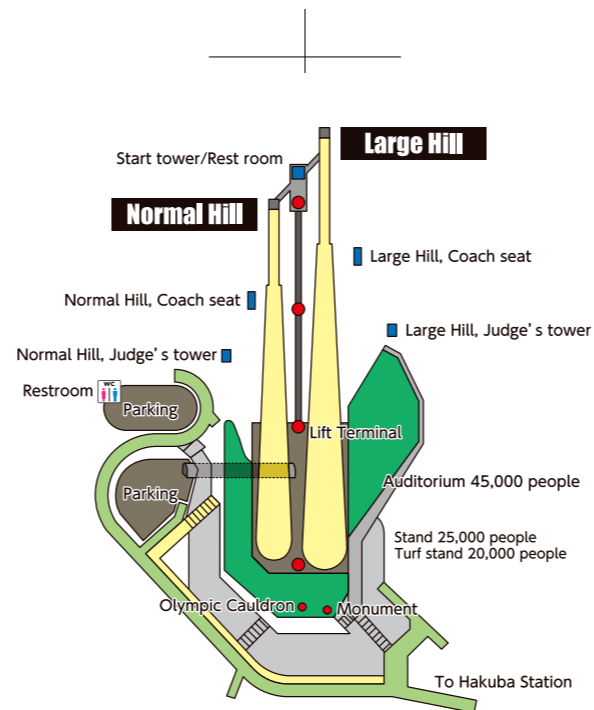
Experience the magic of one of the arenas for the Nagano Olympics and Paralympics. You can get a sense of the excitement of the competition through our displays, starting with the gold medal itself, along with various significant objects and numerous movies.

1998 Nagano Olympic Winter Games Records Ski Jumping

Team..... **Gold** Japan (Takanobu Okabe, Hiroya Saito, Masahiko Harada, and Kazuyoshi Funaki)
Individual Normal Hill... **Silver** Kazuyoshi Funaki, 5th – Masahiko Harada
Individual Large Hill..... **Gold** Kazuyoshi Funaki,
Bronze Masahiko Harada, 6th – Takanobu Okabe

Nordic Combined

Team..... 5th Japan
(Tsugiharu Ogiwara, Satoshi Mori, Gen Tomii, Kenji Ogiwara)
Individual..... 4th Kenji Ogiwara 6th Tsugiharu Ogiwara



Admission Prices

| | Adult (High School and up) | Elementary Jr High School Students |
|------------------------------|-------------------------------|---------------------------------------|
| General | ¥460 | ¥280 |
| Group (15 people or over) | ¥420 | ¥260 |

(Lift and Observation Platform Elevator Prices)

Lift Hours of Operation

| | |
|-----------------------|------------|
| Mid-April to November | 8:30~16:30 |
| Mid-December to March | 9:00~15:30 |

* Lift is closed for maintenance in early April and early December and during competitions.
* Last lift up runs 20 minutes before closing.



Happo, Hakuba, Nagano +81 261-72-7611



HAKUBA SKI JUMPING STADIUM INFORMATION

English