

⑤ “Danboru” ~ Corrugated cardboard

Where?

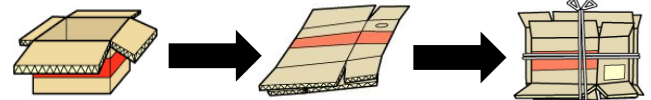
- Ward garbage station
- Hakuba Sanroku Clean Center
- Matsukawa Bulky Waste station



← [Pay attention to this mark !]

- paperboard with both linerboard and corrugating medium
- ※ Only clean items are recyclable. Cardboard with unremovable grease or dirt, like pizza box, is regarded as “① Burnable garbage”.

How To



Flatten it.

Bundle with string in a cross shape.

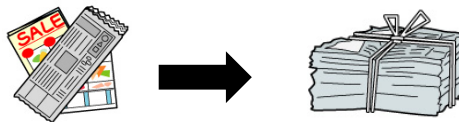
⑥ “Shinbunshi / chirashi” ~ Newspaper & leaflet

Where?

- Ward garbage station
- Hakuba Sanroku Clean Center
- Matsukawa Bulky Waste station

- Newspaper and the inserted leaflet

How To



Bundle with string in a cross shape.

- ※ Newspaper and leaflets can be bundled together.

⑦ “Zasshi / zatsu-gami” ~ Magazine & waste paper

Where?

- Ward garbage station
- Hakuba Sanroku Clean Center
- Matsukawa Bulky Waste station

[Magazine]

- Books, notebooks, comics, catalogue, magazine, etc

[Waste paper]

- Copy paper, pamphlet, memo paper, envelope, poster, paper roll core, etc.

How To



Bundle with string in a cross shape.

- ※ Magazine and waste paper can be bundled together.



However, the following should be thrown away as “ ① Burnable garbage ”.

Non-recyclable paper:

- Crimped postcard
- Heat-reactive paper (receipt, fax paper)
- Waterproof paper (paper cup, paper plate)
- Carbon paper (manifold paper)
- Shredded paper
- Light sensitive paper (photo)

Non-paper objects:

- Tape
- Metal file clip
- Metal clip
- Fabric (cloth rope)
- Plastic window of envelopes

☺ Staples can be left on papers !