



Welcome New Students – Entrance Ceremony Held

The entrance ceremony for the village elementary schools was held. Surrounded by the warm support of parents and teachers, the ceremony was filled with many bright smiles. The new students' faces reflected their excitement as they look forward to making new friends, studying, and participating in various school activities in their new school life. Congratulations to all the new students and their families on this special occasion.



Application Reminder: Hakuba Village Cost of Living Support Benefit

Deadline

May 29, 2026 (no late applications)

Please check your notification letter.

Eligibility

Residents registered as of Nov 1, 2025

Amount

¥15,000 per person (paid to head of household)

Application

Not required if bank details are registered and unchanged

How to Apply

Paper form or official LINE



For inquiries:

Apply via LINE here

General Affairs Division TEL 0261-85-7002

Agricultural & Forestry Subsidies

Hakuba Village provides subsidies for agricultural and forestry activities, including electric fence installation and the purchase of battery-powered equipment and cooling work wear.

UPDATES:

- Electric fence subsidy increased to 100,000yen(max) from 2026
- Cooling work wear now eligible from 2025 (heatstroke prevention)

SUBSIDY OVERVIEW

1. Equipment & Cooling Work wear

- Battery-powered tools (e.g. Brush cutters, chainsaws)
- Fan-equipped cooling wear
- 50% subsidy (up to 20,000yen)
- For landowners or those engaged in agriculture/forestry

2. Electric Fences (Wildlife Protection)

- Materials for electric fences
- 50% of subsidy (up to 100,000yen)
- For farmers, groups, and agricultural corporations

[Note]

- Apply before purchase (no retroactive claims)
- Amounts rounded down to nearest 1,000yen
- Subject to annual budget limits



How to Apply

Submit the application form to Agriculture Division.
Forms and examples are available on the official website.

For inquiries: Agriculture Division Hakuba Village Office Tel: 85-0766

How National Health Insurance Tax is calculated?

As you may know, Japanese Health Insurance Tax is based on your income of previous year in Japan. The NHI Tax is calculated as shown below. In addition, Nursing care portion applies to NHI members between 40 and 64-year-old; Support to latter stage elderly portion is a fund established in FY 2008 to support the Latter-stage elderly medical care system, which is levied on all NHI members who are under 75-year-old.

NEW CONTRIBUTION CATEGORY FROM FY 2026 CHILD & CHILDCARE SUPPORT CONTRIBUTION

What is it?

– The Child & Childcare Support Contribution is a new system where all generations and businesses contribute fund together with their health insurance payments.

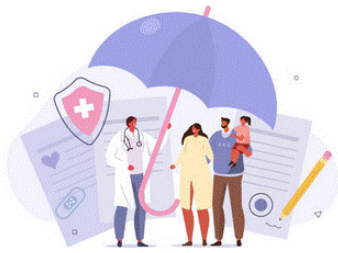
These funds will be used to expand support for families with children, helping society as a whole support child-raising.

What will it fund?

- Expanded child allowances
- Financial support for pregnant women
- Exemptions for national pension premiums during childcare periods

$$\text{Annual NHI Tax} = \text{A} + \text{B} + \text{C} \quad \text{※(rounding A,B\&C down individually to the nearest hundred)}$$

Calculation of Annual NHI Tax



- Ⓐ Calculation of Medical care (basic) portion = ① + ② + ③ (Max. amount: ¥670,000)**
- ① Income portion = $[\text{Income of each working NHI member} - ¥430,000] \times 5.50\%$
 - ② Per-capita portion = $\text{Number of NHI member in the household} \times ¥19,900$
 - ③ Household portion = Each household **¥19,600**
- Ⓑ Calculation of Support to latter stage elderly portion = ① + ② + ③ (Max. amount: ¥260,000)**
- ① Income portion = $[\text{Income of each working NHI member} - ¥430,000] \times 2.50\%$
 - ② Per-capita portion = $\text{Number of NHI member in the household} \times ¥9,300$
 - ③ Household portion = Each household **¥8,000**
- Ⓒ Calculation of Nursing care portion = ① + ② + ③ (Max. amount: ¥170,000)**
- ① Income portion = $[\text{Income of each working NHI member (age 40 to 64)} - ¥430,000] \times 2.20\%$
 - ② Per-capita portion = $\text{Number of NHI member in the household (age 40 to 64)} \times ¥9,800$
 - ③ Household portion = A household includes NHI members between age 40 and 64 **¥7,200**
- Ⓓ Calculation of Child & Childcare Support Portion = ① + ② + ③ + ④**
- ① Income portion = $[\text{Income} - ¥430,000] \times 0.30\%$
 - ② Per-capita portion = $\text{Number of NHI member in the household} \times ¥1,090$
 - ③ Additional per capita (age 18+) = $\text{Number of members aged 18+} \times ¥110$
 - ④ Household portion = **¥1,130/household**

		Ⓐ Medical care (basic) portion	Ⓑ Support to latter stage elderly portion	Ⓒ Nursing care portion	Ⓓ Child & Childcare Supporting Portion	
Income portion	A certain %	last year's annual income	5.50%	2.50%	2.20%	0.3%
Per-capita portion	amount per	NHI member in a household	¥19,900	¥9,300	¥9,800	¥1,090 ¥110 (age 18+)
Household portion		household	¥19,600	¥8,000	¥7,200	¥1,130
Maximum amount	Maximum tax amount		¥670,000	¥260,000	¥170,000	¥30,000

Recalculation & Monthly Adjustment

Amounts will be recalculated if income changes or if members join/leave during the year

Contributions are calculated on a monthly basis

Payment Schedule of FY2026

Water and Sewer Division TEL 0261-85-0714 Taxation Division 0261-85-0712

Taxes/Fees	May	June	July	August	September	October	November	December	January	February	March
Due Date	June 1, 2026	June 30, 2026	July 31, 2026	August 31, 2026	September 30, 2026	November 2, 2026	November 30, 2026	December 25, 2026	February 1, 2027	March 1, 2026	March 31, 2027
Bank Transfer Date	May 25, 2026	June 25, 2025	July 27, 2026	August 25, 2026	September 25, 2026	October 26, 2026	November 25, 2026	December 25, 2026	January 25, 2027	February 25, 2026	March 25, 2027
Resident Tax		①		②		③			④		
Fixed Assets Tax			②					③		④	
Light Motor Vehicle Tax	①										
National Health Insurance Tax		①	②	③	④	⑤	⑥	⑦	⑧	⑨	⑩
Water and Sewer Bill	May	June	July	August	September	October	November	December	January	February	March
Due Date/Transfer Date	May 25, 2026	June 25, 2025	July 27, 2026	August 25, 2025	September 25, 2025	October 26, 2026	November 25, 2026	December 25, 2026	January 25, 2027	February 25, 2027	March 25, 2027

EASY TAX PAYMENT

By scanning the QR code printed on the payment slip with a smartphone or other device, payment of village taxes can be made through the eLTAX website, Apps or at QR code-compatible financial institutions. ◆eLTAX <https://www.payment.eltax.lta.go.jp/>



Volunteer Support for Hakuba Schools

Hakuba Elementary and Junior High Schools, together with the Hakuba Village Board of Education, are seeking volunteers to support student learning and activities. In the 2026 school year, we are looking for volunteers for the following programs to help enrich students' school life. We appreciate the support of our community.

Minami Elementary School

[Ski Area Maintenance & Ski Lessons Support]

- Help with grass cutting on the school ski slope (June and November, PTA activity)
- Assist with ski lessons (January–February)
- Support course preparation for the school ski event

[Learning Support & Field Trip Assistance]

- Support classes, field trips, and outdoor activities
- Help guide students and teach about local nature and history
- Activities include field studies, excursions, and hikes (e.g. Happo Pond)

[Club Activity Instructors]

- Volunteers are needed to lead or support club activities
- Past clubs include Outdoor, Gateball, Handicraft, Art, and Programming
- Clubs vary each year based on student interests

Junior High School

[Math Club Instructor]

- Support students with review and extra learning
- Worksheets are provided by the school
- Answer questions and explain concepts
- About 8 times/year (Wed after school 15:30–16:45)
- Currently supported by 7 volunteers

[English Club Instructor – Beginners Welcome!]

- Led by the school ALT in a fun, interactive setting (no desks or textbooks)
- Students learn English through games across different grade levels
- Support and enjoy activities together with students
- About 8 times/year (usually last Wednesday every 2 months, 15:00–16:00)

[Reading Aloud Volunteer]

- Read books to about 30 students in each classroom
- Style of reading is flexible
- About 8 times per year (time TBD)

[Newspaper Scrapbook Support]

- Students create scrapbooks and write comments on news articles
- Help review and provide feedback
- Twice a month (1st & 3rd Wednesday, 9:00–12:00, flexible timing available)

[“Ai TIME” Activity Instructor]

- Lead or support special activity classes such as calligraphy, sign language, straw crafts, blues harp, yoga, dance, tai chi, table tennis, kendo, etc.
- New class ideas are welcome
- About once/week (Mondays, 15:45–16:20)

Kita Elementary School

[Handicraft Instructor]

- Help with sewing, handicrafts, paper crafts, woodworking, and outdoor activities
- Enjoy creating things together with students

[Hobbies&Activities]

- Read books aloud, teach calligraphy, or play games like shogi and go with students

[Daily Support for School life]

- Help with translation (English, Chinese, Nepali, etc.)
- Support student safety (greetings duty, bear patrols, walking students home)

[Local Exploration & Food Instructors]

- Share local stories (war history, skiing, tourism)
- Guide students on visits to temples, monuments, and the historic Salt Road
- Teach traditional cooking such as miso and tofu making
- Share the unique flavors of Hakuba

[Event Support]

- Assist with school events such as sports day (“Hakuba Folk Song” practice), music concerts, snowmobile work, and field trips

To apply

- Submit an application form directly to Schools.
- *You can also apply on the phone or Email by April 30, 2025

Hakuba Kita Elementary School
☎ 0261-72-2029 hakuban@crocus.ocn.ne.jp
Hakuba Minami Elementary School
☎ 0261-75-2010 hakubas@crocus.ocn.ne.jp
Junior high School Phone
☎ 0261-72-2026 hakubac@hakubajh.ed.jp

*Volunteer works are accepted all-year-around.



Keep the water-stream clean in your properties

Every year there are issues caused by garbage (including grass from mowing) being dumped into the rice fields downstream and clogging the waterways, causing serious obstacles to farming and daily life.

We ask all villagers for understanding of the current situation in the downstream area, and not only in not flushing trash downstream, but also in keeping mowed grass and others out of the waterways and streams as much as possible. We appreciate your cooperation in removing any clogs that may have occurred in your boundary.



For inquiries: Agriculture Division Hakuba Village Office Tel: 85-0766

[7:30-10:30]

Venue: Multi Hall in Hakuba Village Office

June				July			
14	15	16	17	14	15	16	17
Sun	Mon	Tue	Wed	Tue	Wed	Thu	Fri
September				November			
9	10	11	12	11	12		
Wed	Thu	Fri	Sat	Wed	Thu		

Health checkup vouchers have been sent out in stages since middle of May. If you have received your envelope, please check the contents carefully. Applications are still being accepted. Please check the schedule and visit at any time as your convenience.

Fundus Examination

The fundus is the only part of the body where blood vessels can be seen directly from the outside. By having a fundus examination and knowing the condition of your blood vessels, we can detect and prevent cardiac and cerebrovascular diseases at an early stage. Hakuba Village has more cases of death from cardiac and cerebrovascular diseases than any other villages in the prefecture.



Spring Blood Donation

When: May 29(Friday)
13:00-16:00

Where: Fureai Center 1F,
Hakuba Village Office

Donations are vital to help patients.
Please give 400ml if eligible (+ 50kg)

**Nagano prefecture
Emergency Call Center**

When you wonder if you should call ambulance or visit doctors at emergency illnesses or injuries,
Call #7119 *Call 026-231-3021 if you call with Dial IP Line.



Weekday : 19pm- 8am
Weekends/Public Holiday : 20pm- 8am

- Eye diseases that can be found by fundus examination
- Arteriosclerosis and occlusion of retinal blood vessels
 - Diabetic retinopathy
 - Glaucoma (optic nerve papillary depression enlargement)
 - Macular degeneration

Health and welfare Division
TEL 0261-85-0713

Clinics, Hospitals and Pharmacy's open during holidays

For emergency cases of pediatrics and internal diseases on weekday nights, please go to "North Alps Weekday Night Emergency Center for Pediatrics & Internal Medicine". TEL: 0261-26-6199 Please do not request for the ambulance service for minor injury and illness or it will be overloaded when there is an emergency.

Opening Hours: 9 A.M. ~ 5 P.M.					Reception Hours: 9A.M. ~ 11A.M. (Please call before coming over)			Pharmacy On Duty in Hakuba	
M	D	Day of week	Clinic On Duty			Dental Clinic			
			Northern District (Hakuba · Otari)	Omachi City	Southern District (Ikeda · Matsukawa)				
May	24	SUN	Hakuba International Clinic	Ishizone Clinic	Azumi Hospital	-	-	-	Ota Pharmacy
	31	SUN	Hakuba Clinic	Kakishita Clinic	Ota Clinic	-	-	-	Fujinoya Pharmacy
June	7	SUN	Otarimura Clinic	Kikuchi Clinic	Matsumoto Clinic	-	-	-	-
	14	SUN	Shintani Clinic	Ono Clinic	Azumi Hospital	-	-	-	Fujinoya Pharmacy

Clinic / Dental Clinic Map

<HAKUBA>

Hakuba 47 Ski Resort

Hakuba Goryu Ski Resort

Kamishiro Sta. Ilmorog Sta. Fire Station

To Omachi Hakuba Sta. To Otari

① Hakuba Clinic 75-4123
② Kamishiro Clinic 75-7050
③ Shintani Clinic 75-4177
④ Hakuba Inter. Clinic 85-2264
⑤ Kurita Clinic 72-2428
⑥ Yokosawa Clinic 72-2008
⑦ Otarimura Clinic 82-2044
● Fujinoya Pharmacy 75-2017
● Ota Pharmacy 72-5593
● Apple Pharmacy 72-6203
I . Takeda Dental Clinic 72-8060
II . Oda Dental Clinic 72-6482
III . Otari Dental Clinic 82-2762